

# LAKE MANITOU ASSOCIATION

[www.lakemanitou.org](http://www.lakemanitou.org) | [facebook.com/manitouassociation](https://facebook.com/manitouassociation)

## UPCOMING EVENTS

- † **4/27, 9am - MEMBERSHIP Q&A MEETING, Moose Lodge**
- † **5/27, 2-5pm - POKER RUN, start/end at Moose Lodge**
- † **6/8, Noon - OPENING OF LAKE PARADE, Moose Lodge**
- † **6/29, 9am - ANNUAL MEETING, Moose Lodge**
- † **6/29 - MOOSE SKI SHOW**
- † **8/10, 5pm - ROAST & TOAST, Hog Roast and Auction, Moose Lodge**
- † **8/31, 9am - MEMBERSHIP Q&A MEETING, Moose Lodge**

## 2019 MEMBERSHIP LEVELS

\$1,000	DIAMOND
\$500	PLATINUM
\$250	GOLD
\$100	SILVER

## JOIN TODAY

Membership Card Inside  
or visit our website to use PayPal

## THANK YOU

YOUR GENEROUS CONTRIBUTIONS  
ALLOW FOR THE CONTINUED  
ENJOYMENT OF LAKE MANITOU!

## PROJECT UPDATES INSIDE!

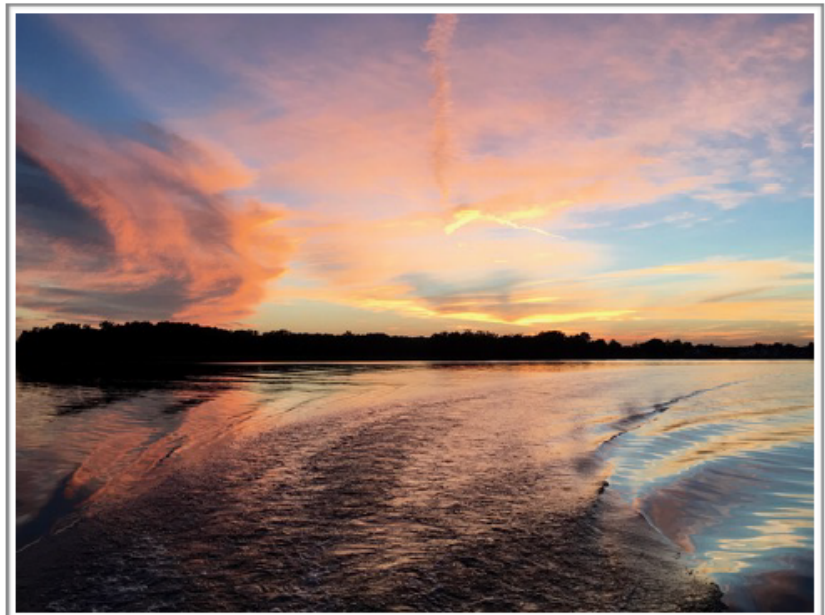
### COMMUNICATION IS KEY

The Lake Manitou Association's goal is to make sure all residents around the lake are well-informed about our projects and to communicate why your membership and support is vital. We plan to continue to provide updates to make sure you and all stakeholders of Lake Manitou know the value of the Association.

We plan to send newsletters with regular updates on our projects, important information and upcoming events on The Lake. Visit our website and Facebook page for the latest information as well!

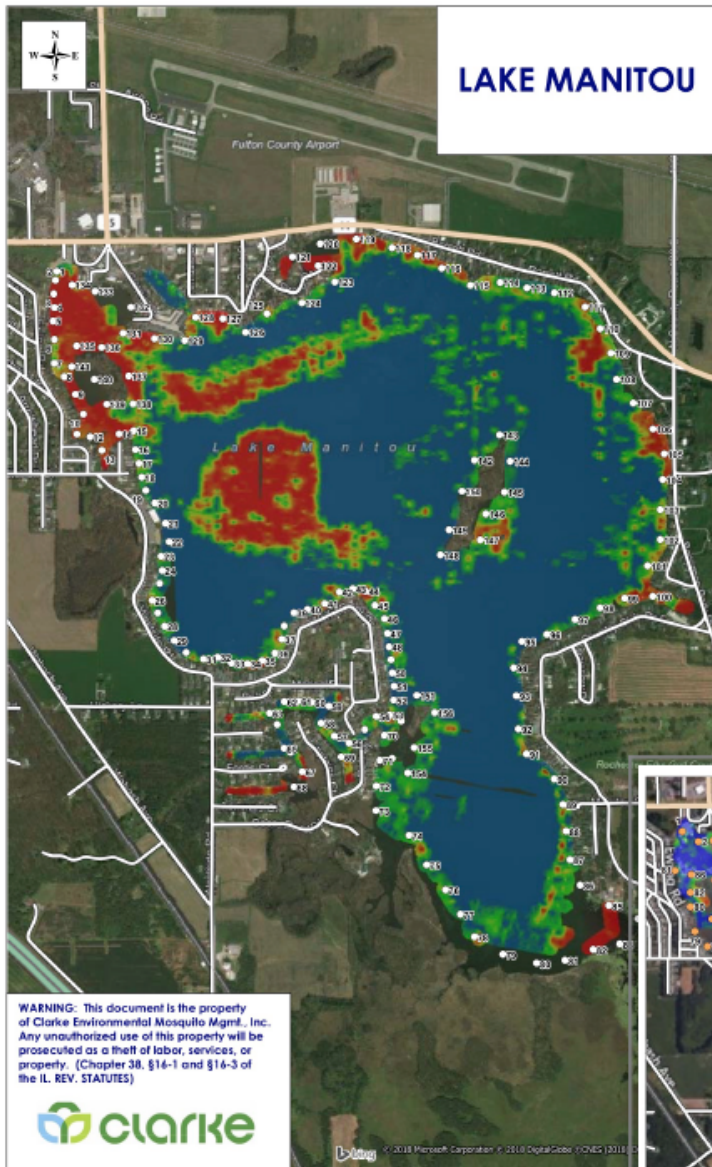
### HAVE QUESTIONS?

We have scheduled two **informational meetings** to be held at the Moose Lodge - **April 27th & August 31 at 9:00 am**. The LMA board will be available to answer questions about membership, projects and any other questions or concerns you may have. We invite you to attend!



# WHAT IS BIO BASE MAPPING?

After the Hydrilla treatment, which essentially wiped out all plant life in Lake Manitou, LMA's major focus has been to restore the natural ecosystem by monitoring of the re-growth of healthy plant life. Each year the Association works with Clarke Aquatic to monitor aquatic habitat information using sonar and GPS data. While on the lake, Clarke uses depth finders to passively collect data and store it electronically helping us scientifically document levels, types and locations of all existing plant life. This information is key to keeping the ecological health of Lake Manitou in balance. This self-funded monitoring also helps Lake Manitou build credibility with the State of Indiana for future lake enhancement grant opportunities. *Additional details are available on our website.*

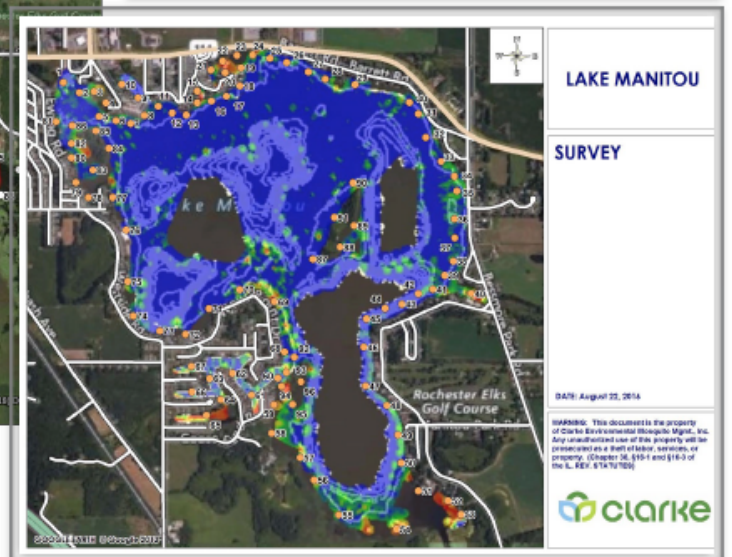


8/27/18 Bio Base Map (left)

Green & Red areas show vegetation growth, with Red being more concentrated.

8/22/16 Bio Base Map (below)

Showing little to no vegetation in our lake 2 years ago.



## DREDGING

After the completion of the White Creek dredging project this past fall, we continue to evaluate sustainable programs to help filter incoming sediment from our two main tributaries; Rain Creek and Graham Ditch/White Creek. Quotes are currently being obtained for 10 additional shallow/sediment-filled areas on Manitou.

## WATERSHED STUDY

If we are to limit incoming sediment and nutrients to improve water quality on Lake Manitou, we must better control our main tributary, Rain Creek. A strong association membership is vital to this goal.

Last year, LMA contributed a 20% match to a Lake and River Enhancement funded study of Rain Creek. The study produced recommendations for sediment collection projects, however, LMA has not moved forward with any of the study's recommendations as the proposals are not financially sustainable with the current membership income.

In addition to this research, the local Soil & Water Conservation District has been granted funding for a study of our entire 28,000 acre watershed. The Association will contribute \$2,000 towards the SWCD's 20% match.

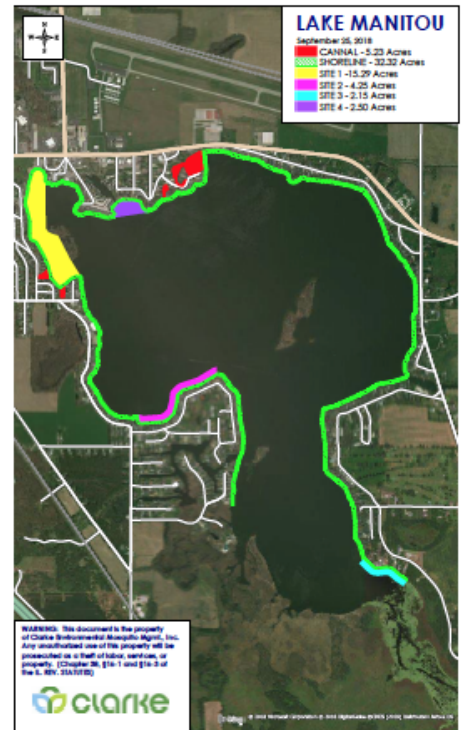
## GRAHAM DITCH SEDIMENT BASIN MAINTENANCE

Graham Ditch, our second largest tributary, requires regular removal of built up sediment in its collection system. We will continue to monitor the sediment levels and have budgeted for clean-out of the basin/filters as regular maintenance. Check out our website for a fascinating aerial video of how Graham Ditch works.

## AQUATIC PLANT LIFE

The 2019 aquatic plant control project is necessary in order to reduce the growth of plants that choke our main navigable waterways and limit access to properties. Clarke Aquatic Services will treat areas based on the bio base mapping we fund, which is approved by the State. Treatments will take place in June and the end of July/early August.

Total cost of the treatments for 2019 is \$40,000. This important program is a new annual expense for Lake Manitou; just one of the many reasons your membership is so important to our community.



MAP of TREATMENT AREAS

## AQUATIC PLANT CONTROL PACKS FOR INDIVIDUAL RESIDENCES

The association has negotiated discount pricing for aquatic plant chemical packs to assist individual residences with plant control. The DNR allows 625 sq. ft. to be treated without a permit. We urge residents to follow all instructions to properly and safely treat plant life along your shoreline.

*This program is optional. Order form available on our website.*





P.O. Box 376, Rochester, IN 46975  
[www.lakemanitou.org](http://www.lakemanitou.org)



Follow our Facebook page for updates on events and important LMA information!

## Join Us In Keeping Manitou Healthy, Safe and Fun!

We need 100% participation to keep up with regular maintenance and future project expenses.

**We thank you for being a vital part of keeping our lake a treasured place to live and play!**



**BECOME A MEMBER TODAY!!!**

Name: \_\_\_\_\_

Lake Address: \_\_\_\_\_

Lake Phone: \_\_\_\_\_ Cell Phone: \_\_\_\_\_

Mailing Address: \_\_\_\_\_

\_\_\_\_\_

Email: \_\_\_\_\_

**ANNUAL MEMBERSHIP DUES:**

Silver Member \$100

Gold Member \$250

Platinum Member \$500

Diamond Member \$1,000

Your support is the heartbeat of Lake Manitou. Our lake depends on your continued support. To become a member, complete the information above, select your membership category, and pay the corresponding dues (make checks payable to Lake Manitou Association). Return this postcard to the Lake Manitou Association, Box 376, Rochester, IN 46975. Dues for your LMA membership are payable January 1 and are current for calendar year.